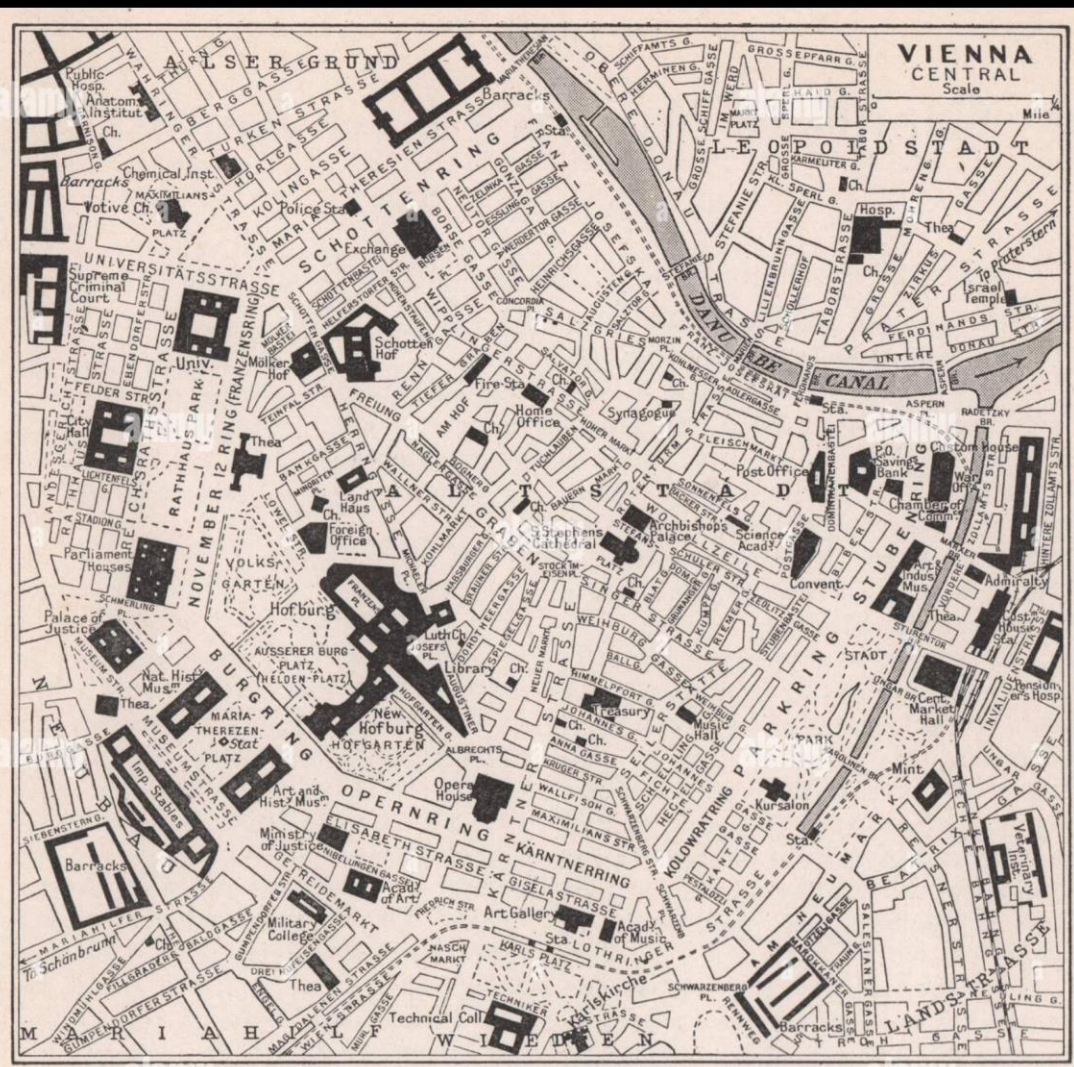


Workshop 1



Workshop 1: Vienna, Austria

Urban Tissue - Observations to the City

1.1 Characteristics - Types and Patterns

The observation of two parts of Vienna, one seemingly random and the other in order.



Group 4: Chung Wei Ning Vanessa, Jones Delgado Maria,
Liu Chit Ching Jessica, Lee Tsz Hei Adrian

Workshop 1: Vienna, Austria

City Structure Level - Observations to the City

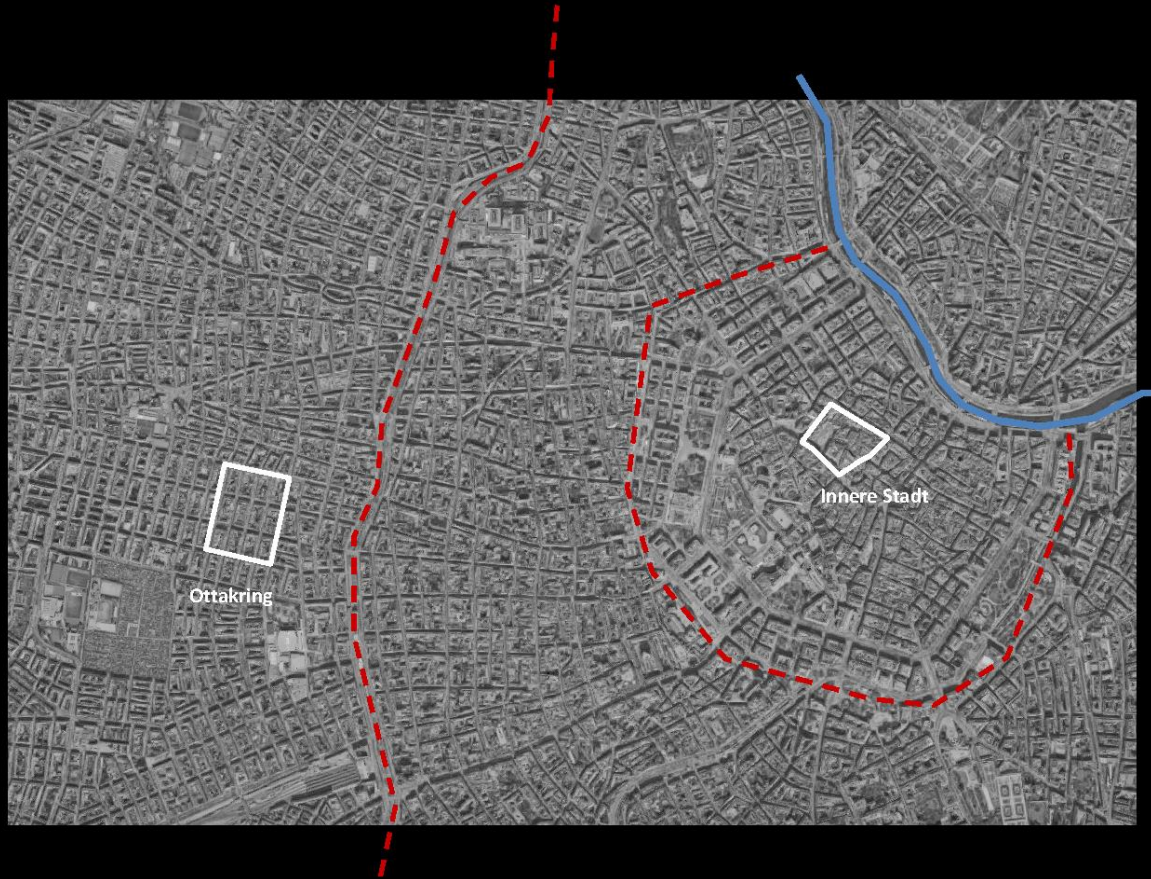
1.2 Characteristics -

Thematic:

- Whilst city has two distinct areas and grids, the centre being medieval, circular and winding, and the outer periphery, grid like and expanding out from the radial, both areas are Thematic to Vienna

Non Thematic:

- Breakages to the fabric, intersections between the grids and other non conforming spaces are considered Non Thematic to each respective area.



Workshop 1: Vienna, Austria

Tissue Level: 2.1 Thematic Space

Thematic Characteristics - Innere Stadt

- Winding medieval roads and streets weaving through the urban tissue like arteries in a roughly radial fashion
- Multiple courtyards enclosed by building blocks

Innere Stadt

Thematic Characteristics - Ottakring

- Rectangular grid defining the orderly dispersion of rectilinear perimeter blocks
- Internal courtyards enclosed by the perimeter blocks

Ottakring

Chung Wei Ning Vanessa, Jones Delgado Maria,
Liu Chit Ching Jessica, Lee Tsz Hei Adrian

Workshop 1: Vienna, Austria

2.2 Thematic Building

Thematic Characteristics - Innere Stadt

- Building blocks shaped by the meandering streets
- Narrow and densely packed

Thematic Characteristics - Ottakring

- Perimeter blocks with rectilinear plots defined by the rectangular grid of the streets
- Also fairly narrow and densely adjacent to each other
- Perimeter blocks formed by roughly 16mx10m terraced buildings sharing party walls



Innere Stadt



Ottakring

Chung Wei Ning Vanessa, Jones Delgado Maria,
Liu Chit Ching Jessica, Lee Tsz Hei Adrian

Workshop 1: Vienna, Austria

3.1 Non-Thematic Space

- Non-Thematic Characteristics - Innere Stadt
 - Piazzas
 - Palace Gardens/Courtyards

Innere Stadt

3.2 Non-Thematic Building

- Non-Thematic Characteristics - Innere Stadt
 - Churches/Chapels
 - Palace

Non-Thematic Characteristics - Ottakring

- Ottakring
 - Plots within the rectilinear grid that are distorted by public place and infrastructure such as:
 - Civic Plazas
 - Parks
 - Smaller Housing
 - Municipal Buildings

Ottakring

Non-Thematic Characteristics - Ottakring

- - Buildings within the rectilinear grid that are distorted by public place and infrastructure such as:
 - Churches
 - Municipal District Office
 - Schools
 - Bus Depot

Chung Wei Ning Vanessa, Jones Delgado Maria,
Liu Chit Ching Jessica, Lee Tsz Hei Adrian

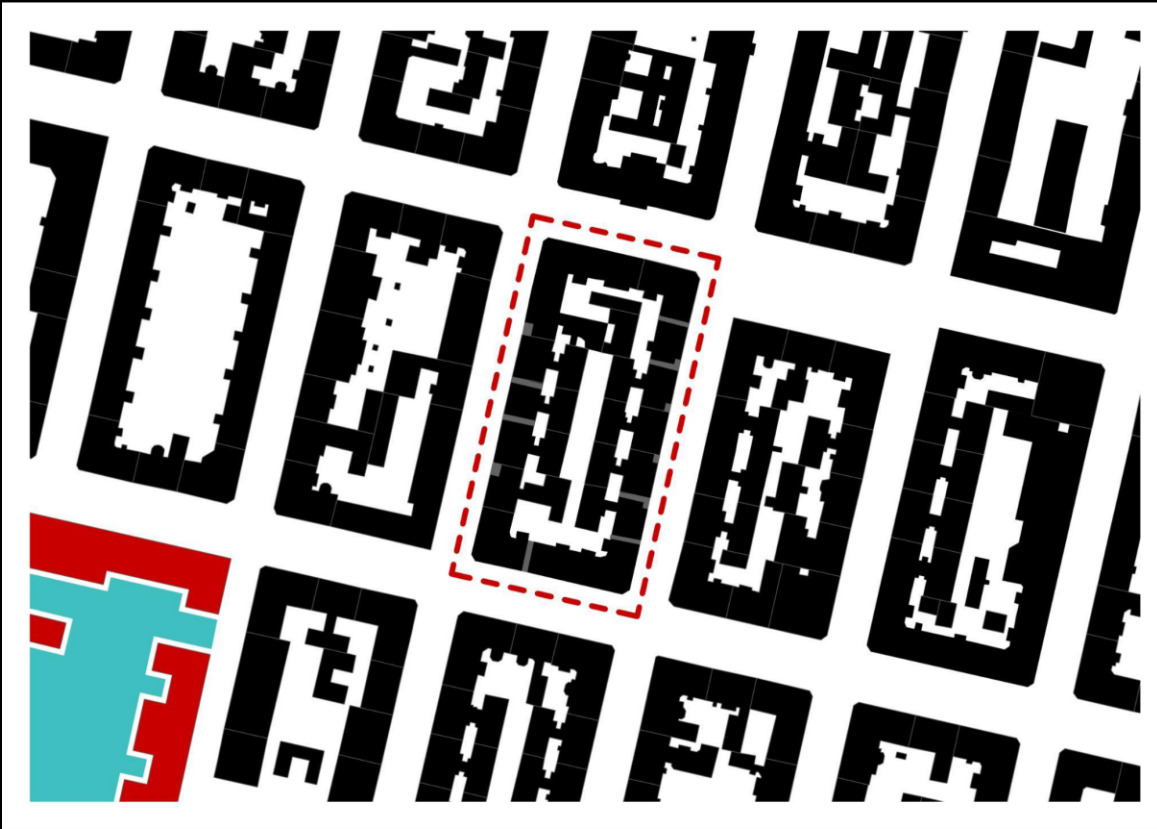


Workshop 1: Vienna, Austria

Support Level: 3.3 Thematic Building
Case Study Location

Thematic Characteristics -

- Typical Housing block
- Containing apartments and shop fronts
- Courtyards shared within the block
- Variety of structures within the block courtyard that vary from block to block



Site Location in Ottakring

Chung Wei Ning Vanessa, Jones Delgado Maria,
Liu Chit Ching Jessica, Lee Tsz Hei Adrian

Workshop 1: Vienna, Austria



Innere Stadt



Ottakring

4.1 Territorial Behavior

- The organisation of grids and its bold structure frames the neighborhood and demonstrates the level of territorial hierarchies
- The spaces are divided into public and private inner gardens
- The open courtyard is shared amongst the complex which its structure creates flexibility for change and adaptation by the people
- Controlled by the bold architecture, dynamic is generated within the shared common area.

Order of form, place and understanding

- The order of form, place and understanding can be notice through structure elements of Staircase, Masonry Shear wall, Balcony and demonstrate its territorial behavior.



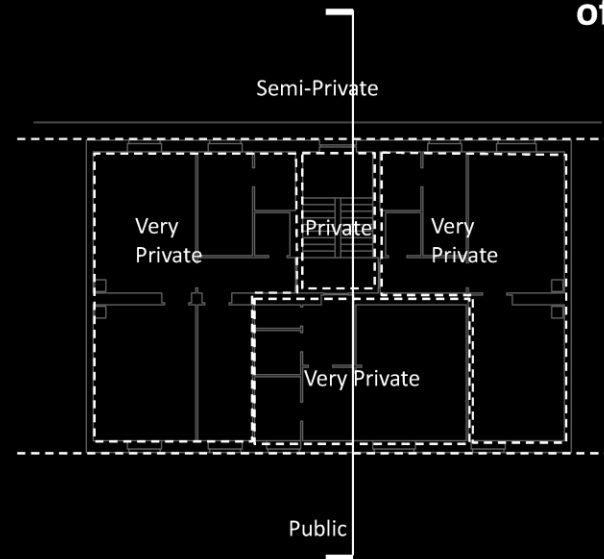
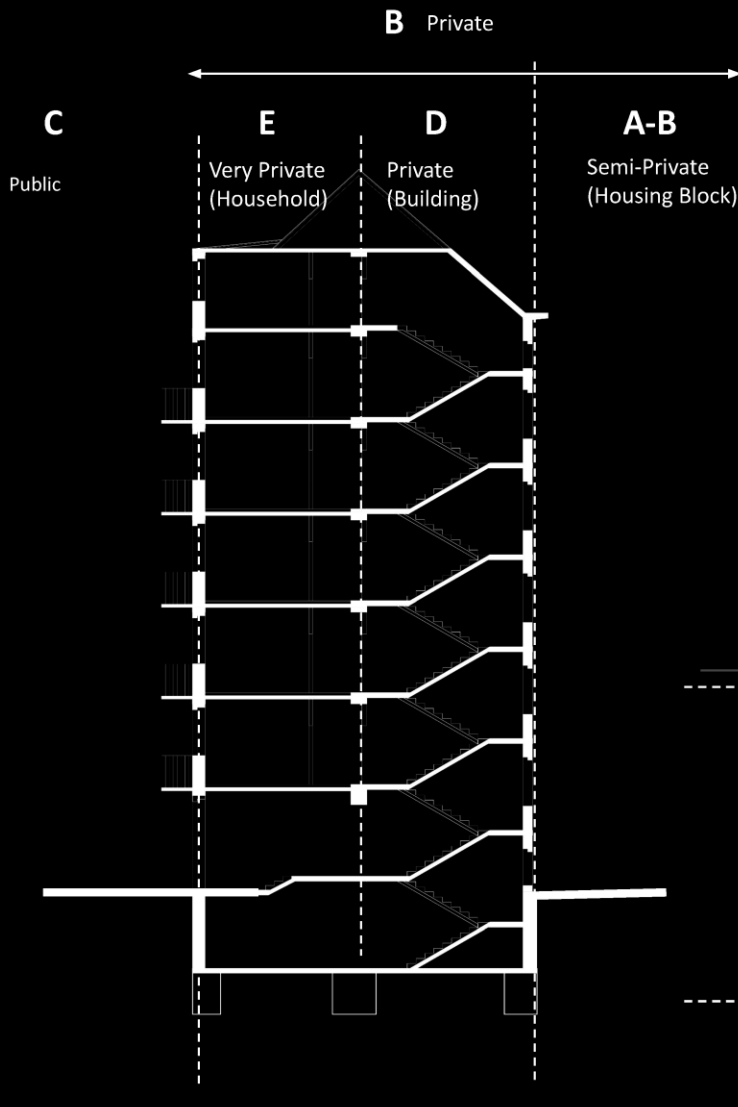
Courtyards of Innere Stadt

Chung Wei Ning Vanessa, Jones Delgado Maria,
Liu Chit Ching Jessica, Lee Tsz Hei Adrian

Workshop 1: Vienna, Austria

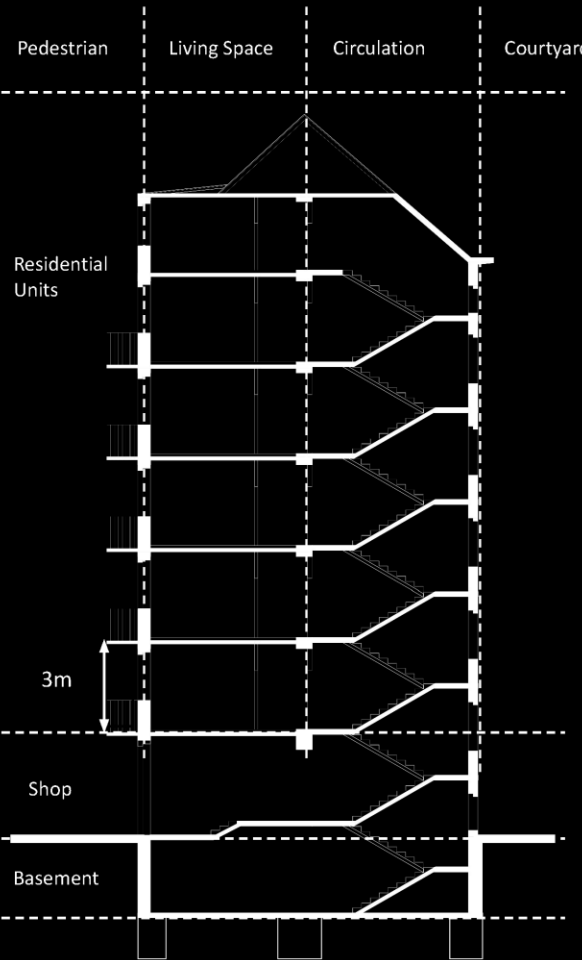
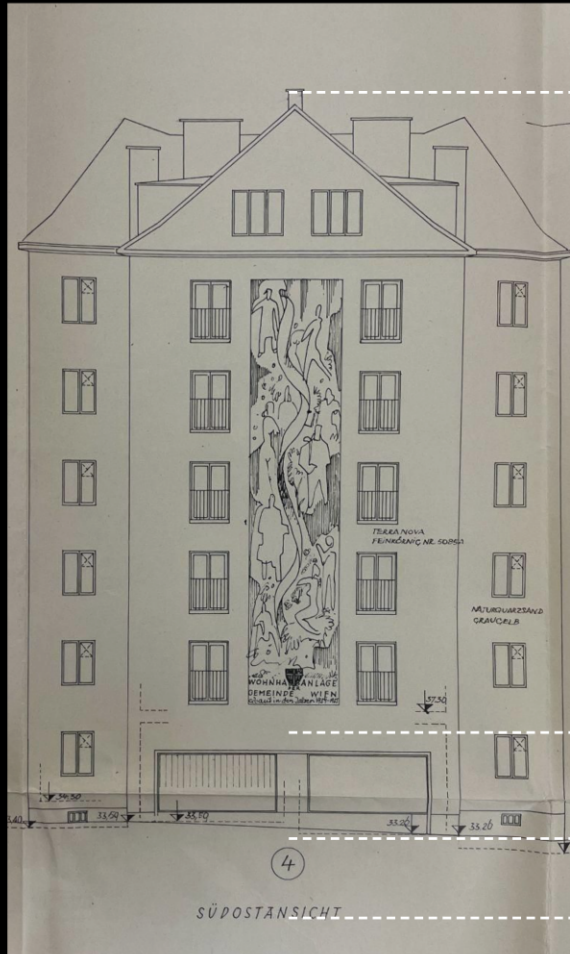
House Level: 4.2 Territory in Levels

- **Public** - street, accessible to all
- **Semi-private** - shared internal courtyard accessible to everyone living in the housing block/open access to public
- **Private** - circulation staircase of building only accessible to residents of building/guests
- **Very Private** - living quarters only accessible by members of household



Chung Wei Ning Vanessa, Jones Delgado Maria,
Liu Chit Ching Jessica, Lee Tsz Hei Adrian

Workshop 1: Vienna, Austria



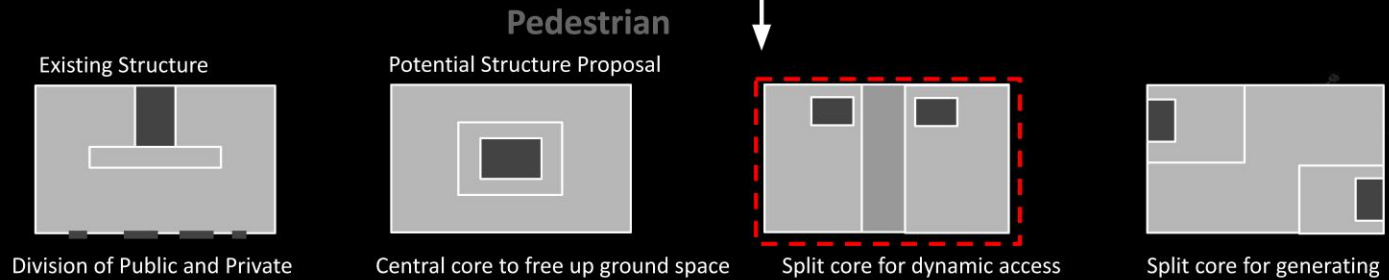
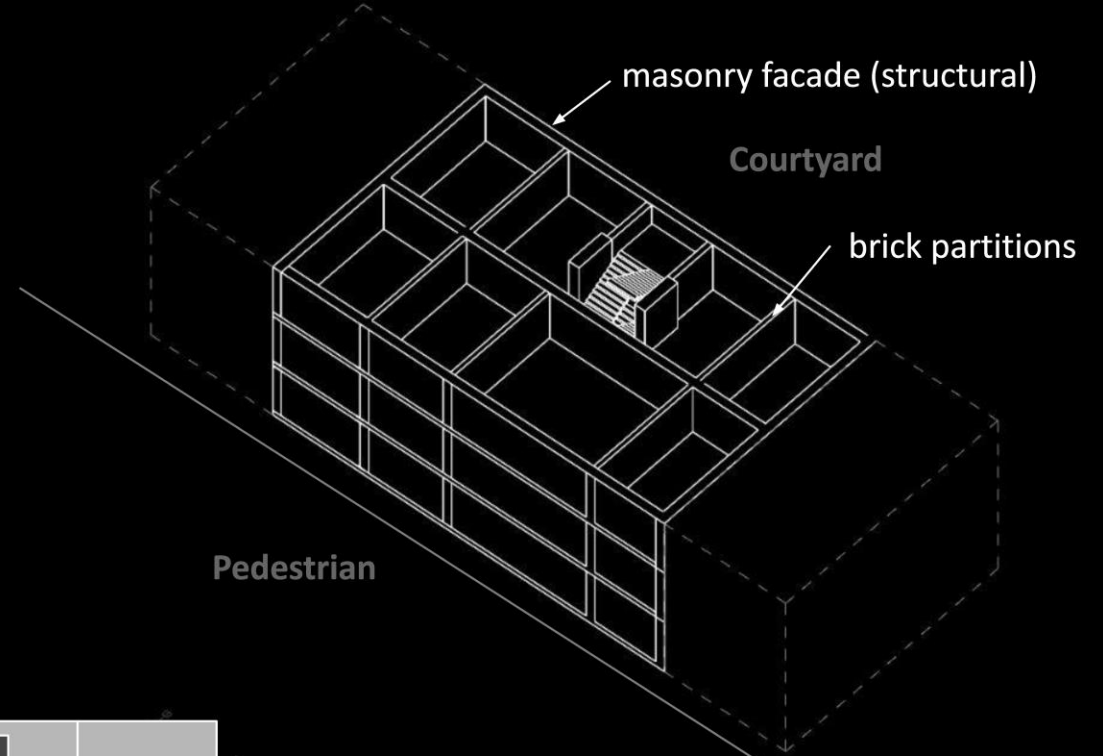
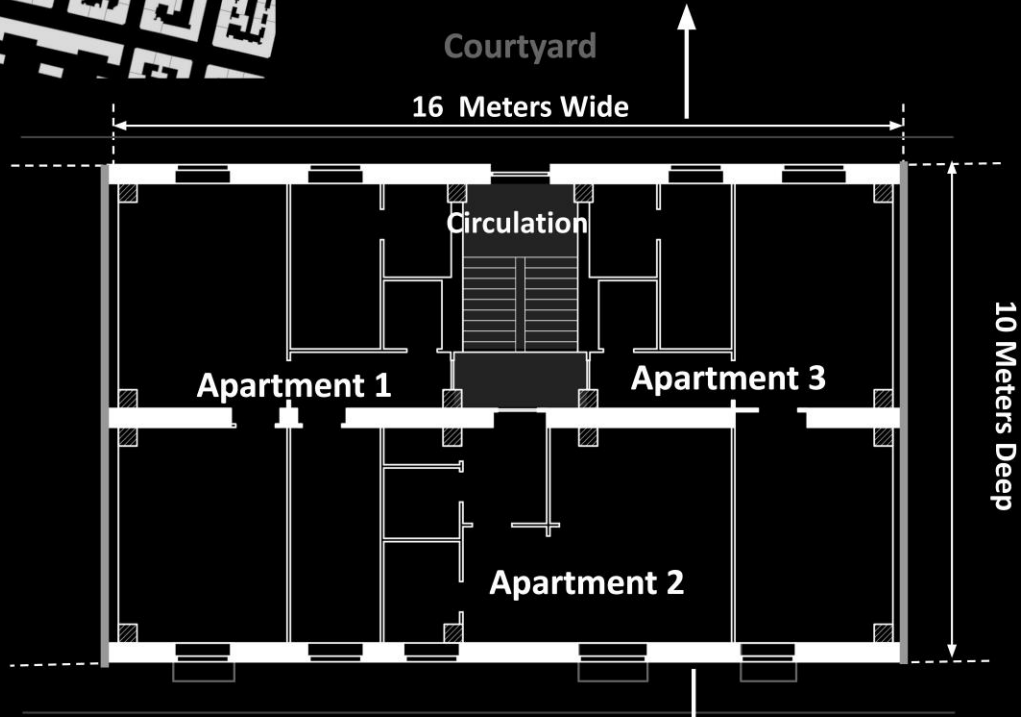
5.1 Building Structure in Section

- 3 meter floor-to-floor height for residential floors
- Columns and beams clearly demarcating living space and circulation space
- Structural masonry shear walls on the facade provide primary structure
- Inward facing balconies to enjoy the semi-private territory of the inner courtyard, shielded by the perimeter block
- Public shops on the street facing side allows some public perforation into the block

Chung Wei Ning Vanessa, Jones Delgado Maria,
Liu Chit Ching Jessica, Lee Tsz Hei Adrian

Workshop 1: Vienna, Austria

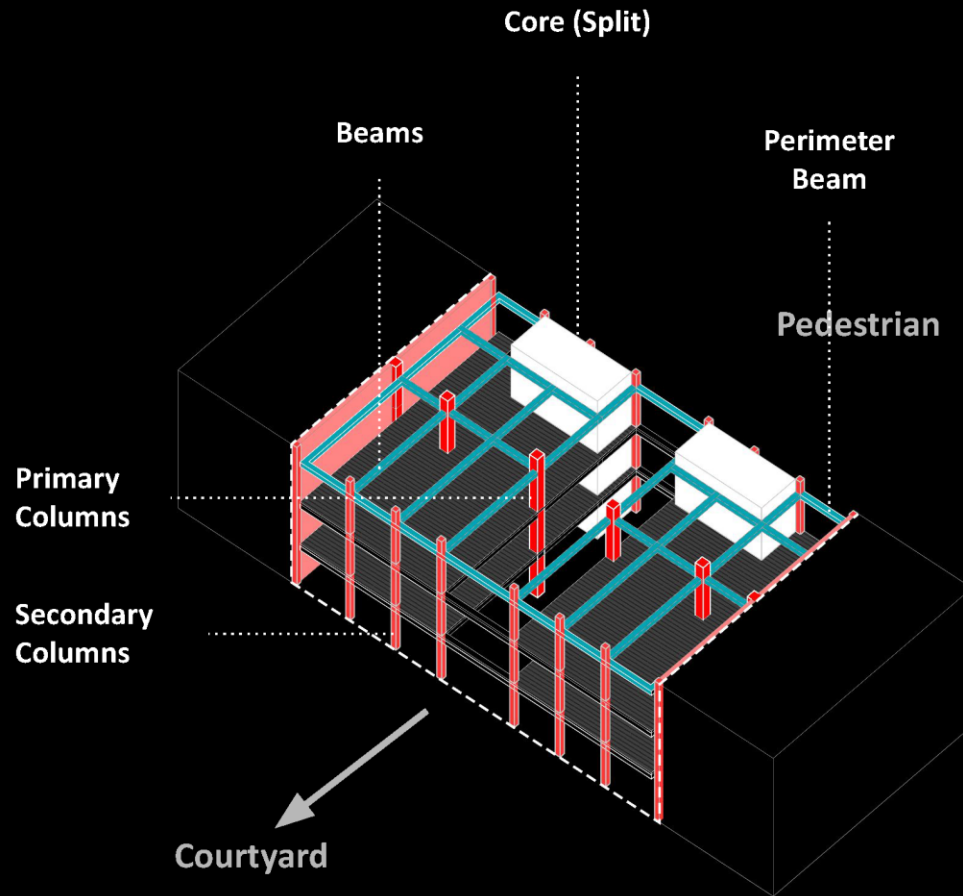
5.2 Original Structure analysis



Chung Wei Ning Vanessa, Jones Delgado Maria,
Liu Chit Ching Jessica, Lee Tsz Hei Adrian

Workshop 1: Vienna, Austria

6.1 Structure Proposal - Penetrating the Perimeter Block



1. Dynamic Access

- Split core opens up corridor for dynamic access from pedestrian street into the internal courtyard of the perimeter block at ground level
- Improved permeability of the block is achieved while maintaining the territorial hierarchies of individual buildings

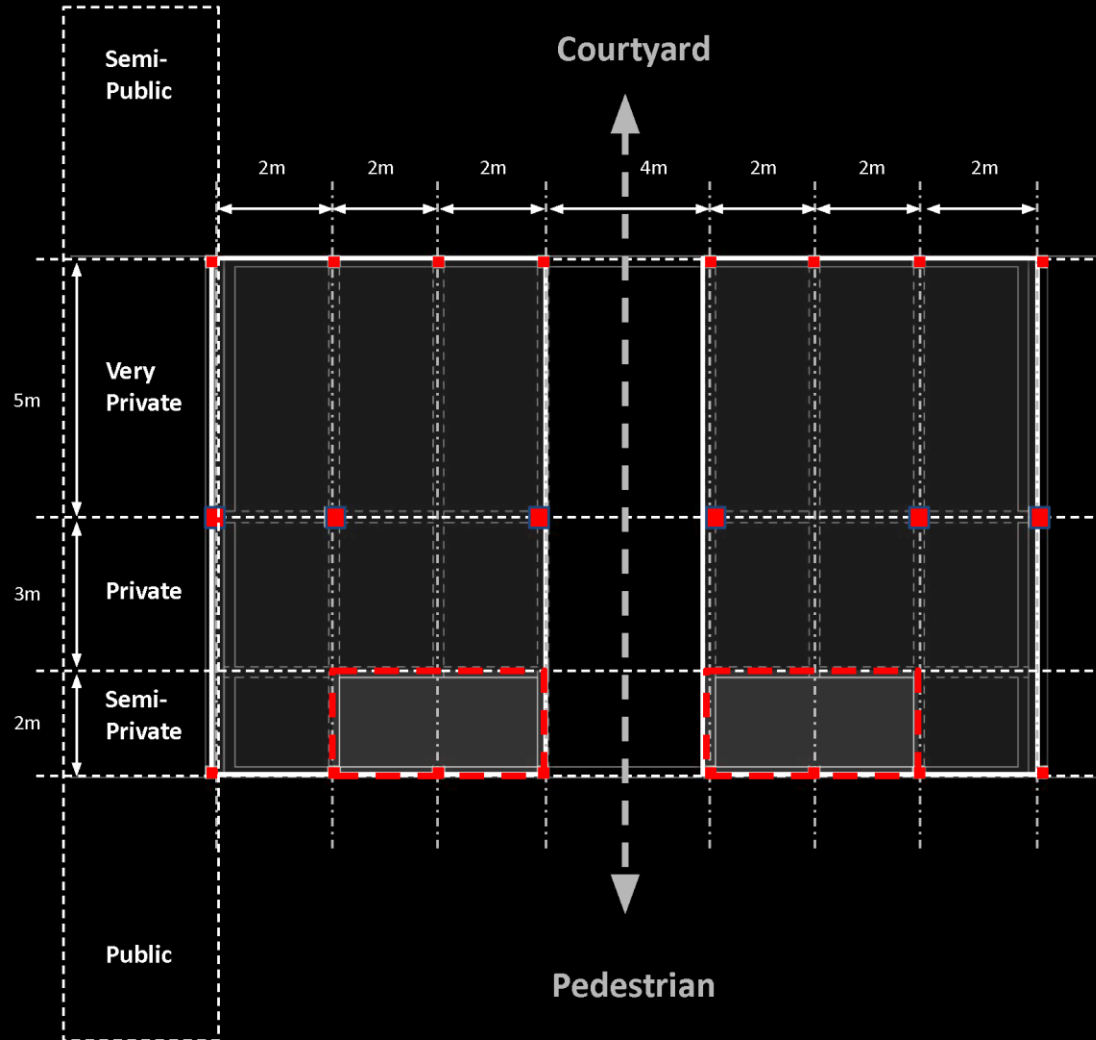
2. Longevity and Respecting Thematic Characteristic of Building

- Keeping the neighborhood party wall in order to respect neighborhood privacy and maintain structural integrity/longevity
- Primary columns maintain structure horizontally bisecting the plan's orientation towards public and semi-public territories
- Secondary columns maintain rhythmic intervals of facade

Chung Wei Ning Vanessa, Jones Delgado Maria,
Liu Chit Ching Jessica, Lee Tsz Hei Adrian

Workshop 1: Vienna, Austria

6.2 Structure Proposal



3. Order of Place

- Adaptive use of original structural grid to maintain territorial variance and residential layouts (cultural).
- Flip building's orientation so that private territories are facing semi-public courtyard rather than public pedestrian street
- Articulate sense of structural depth and territorial levels
- Structure suggests potential structural segregation between public, private, and very private territories

4. Materiality

- Steel frame is adapted not only to prolong the lifespan of the structure stability, but also to reduce the volume of the structure thus create more free and flexible space within a limited site.

Chung Wei Ning Vanessa, Jones Delgado Maria,
Liu Chit Ching Jessica, Lee Tsz Hei Adrian

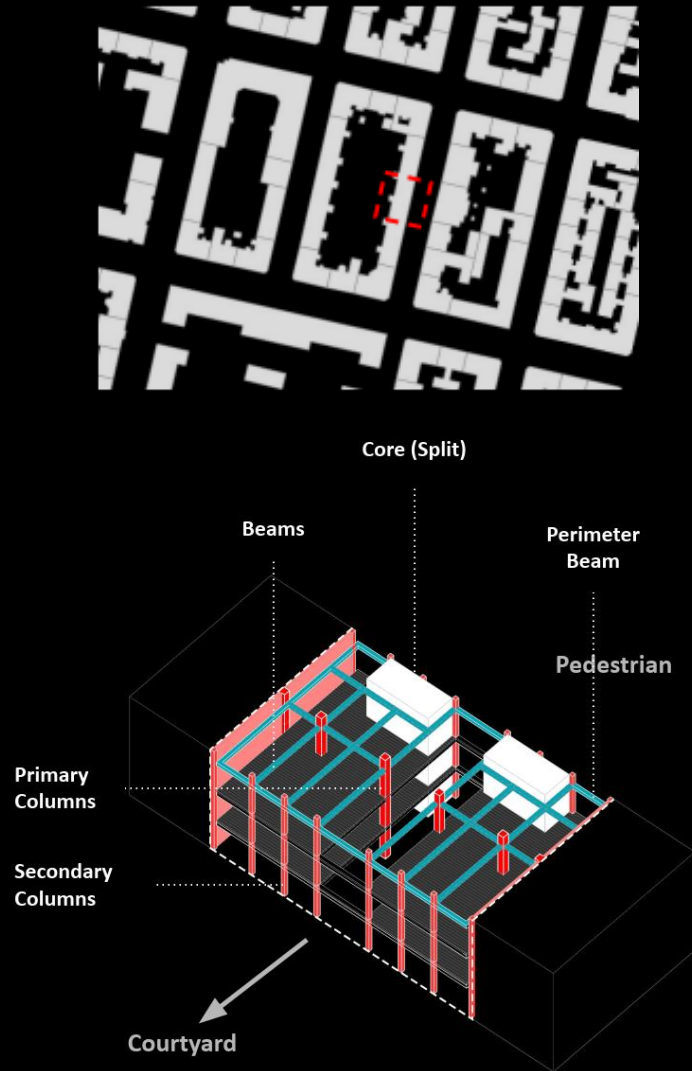
Workshop 2

Workshop 2 façade: Vienna, Austria

Context analysis

1. Form

- The proposed structural design creates flexibility for the façade design, which gives us the opportunity to create diverse domains through the interior design.
- With the proposed structural design, we can use the deep and operable façade to create sheltered spaces for neighbors and even pedestrians.
- Also, the structure achieves the connection between the courtyard and urban space, and the corridor could rich the public space.



Workshop 2 façade: Vienna, Austria

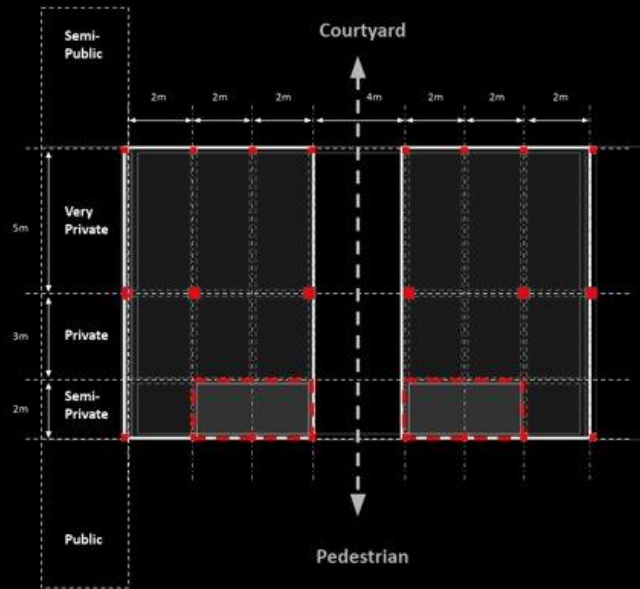
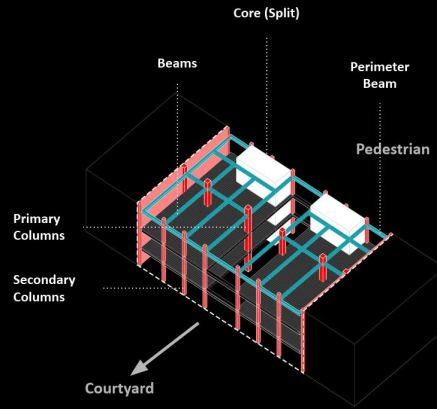
Context analysis

2. Place

This proposed structural design provides opportunities for façade design where people can walk, engage in leisure activities or socialize. Compared with the existing design, the undesigned facade is just a monotonous urban background, not a place for diverse urban life.

3. Territory levels

The structure design create diverse territory levels by using corridors links the courtyard and pedestrian.



Workshop 2 façade: Vienna, Austria

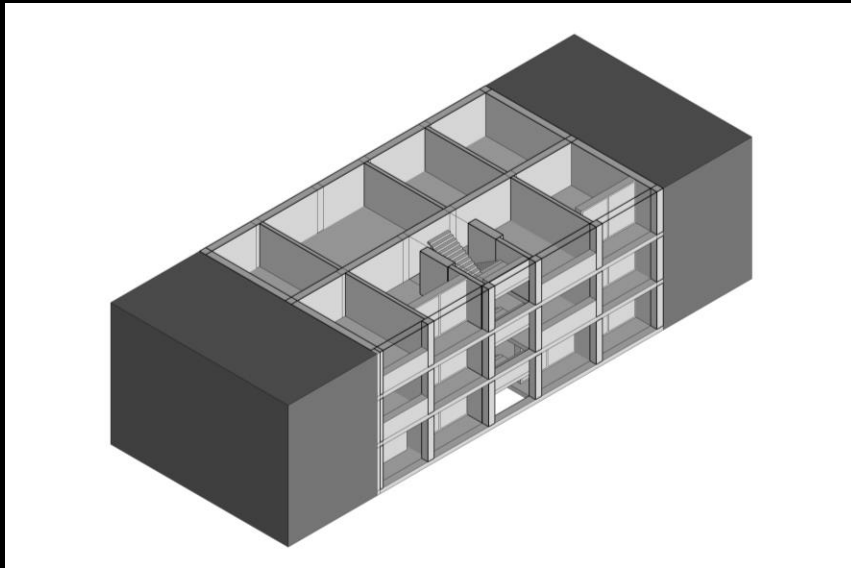
1. Façade design: Deep and operable façade

2. Place

This proposed structural design provides opportunities for façade design where people can walk, engage in leisure activities or socialize. Compared with the existing design, the undesigned facade is just a monotonous urban background, not a place for diverse urban life.

3. Territory levels

The structure design create diverse territory levels by using corridors links the courtyard and pedestrian.



Workshop 2 façade: Vienna, Austria

1. Façade design: Façade for mental health

2. Place

This proposed structural design provides opportunities for façade design where people can walk, engage in leisure activities or socialize. Compared with the existing design, the undesigned facade is just a monotonous urban background, not a place for diverse urban life.

3. Territory levels

The structure design create diverse territory levels by using corridors links the courtyard and pedestrian.

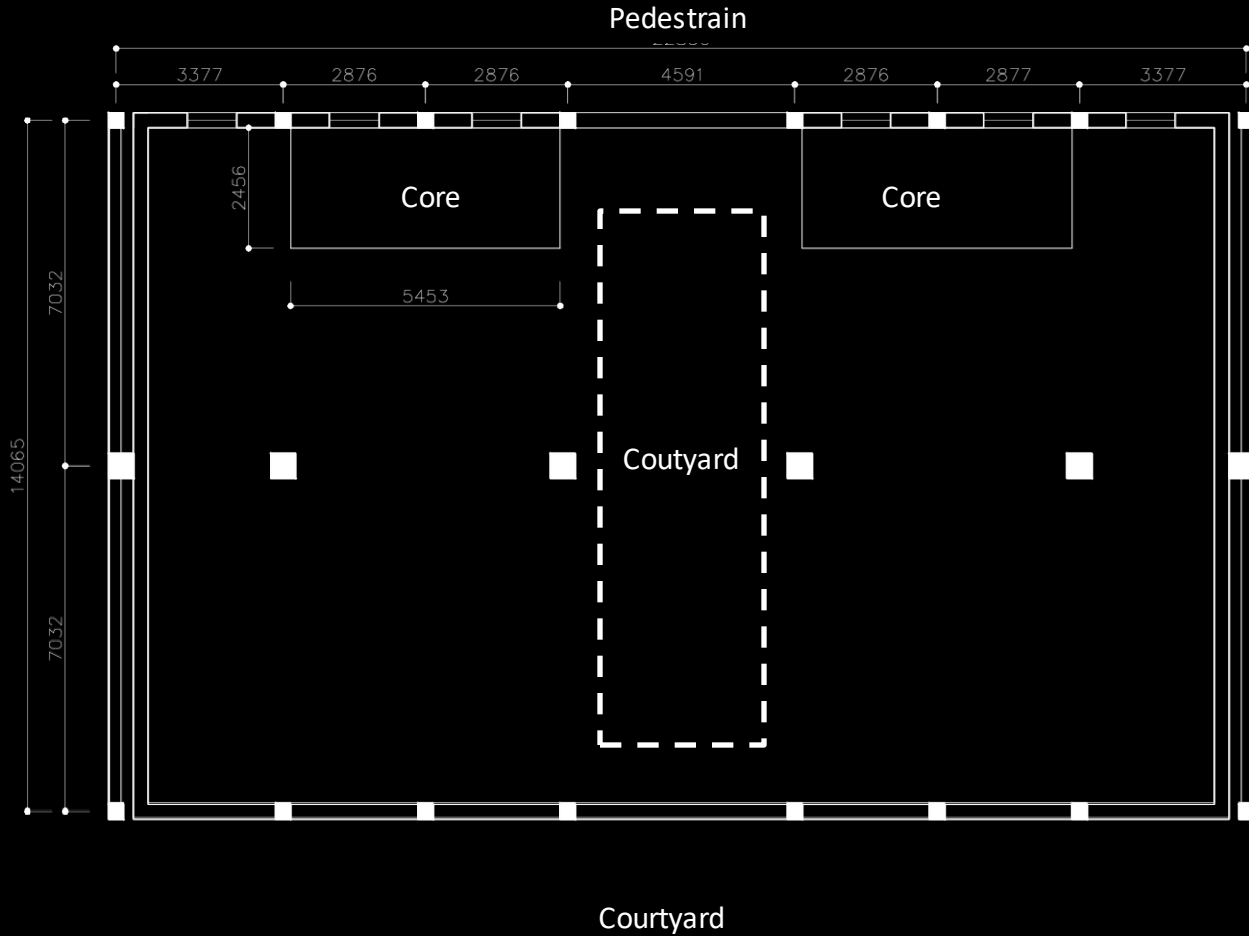


Street

Workshop 3

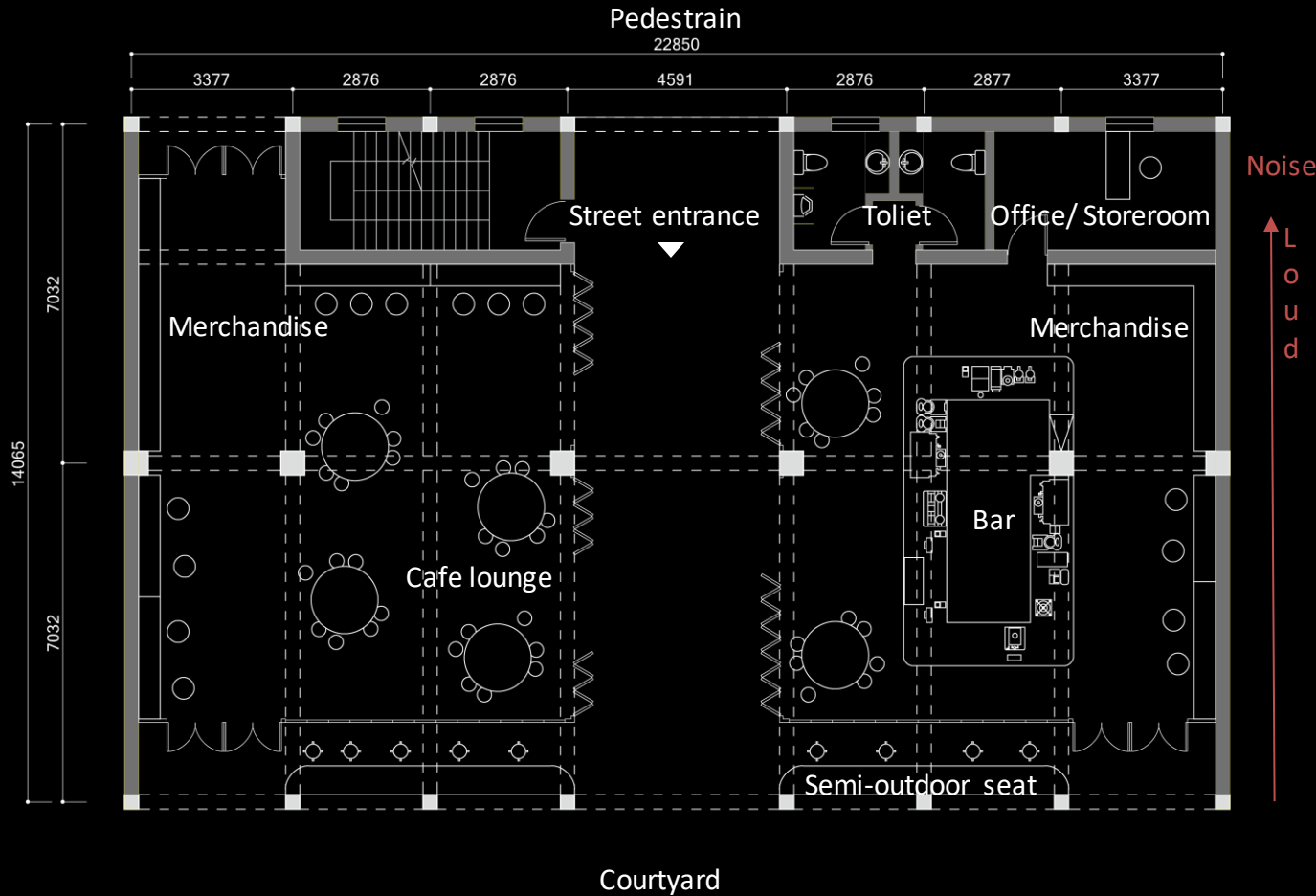
Workshop 3 Interior design: Vienna, Austria

Original Plan



Zhuang Peida, Chen Guojin, Gu Jiacheng, Wu Zhuoying

Workshop 3 Interior design: Vienna, Austria



Ground floor: Cafe / Bar

CONCEPT:

Nomadic / Sedentary:

Round Table / Square Platform

A primitive bar, symbolizing a return to the origin of architecture, is erected in the center of the space; it is where the coffee or drinks are prepared and served, and forms the visual and circulatory focal point of the project.

Gu Jiacheng

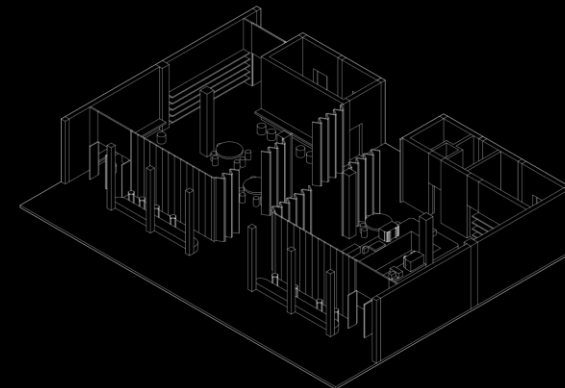
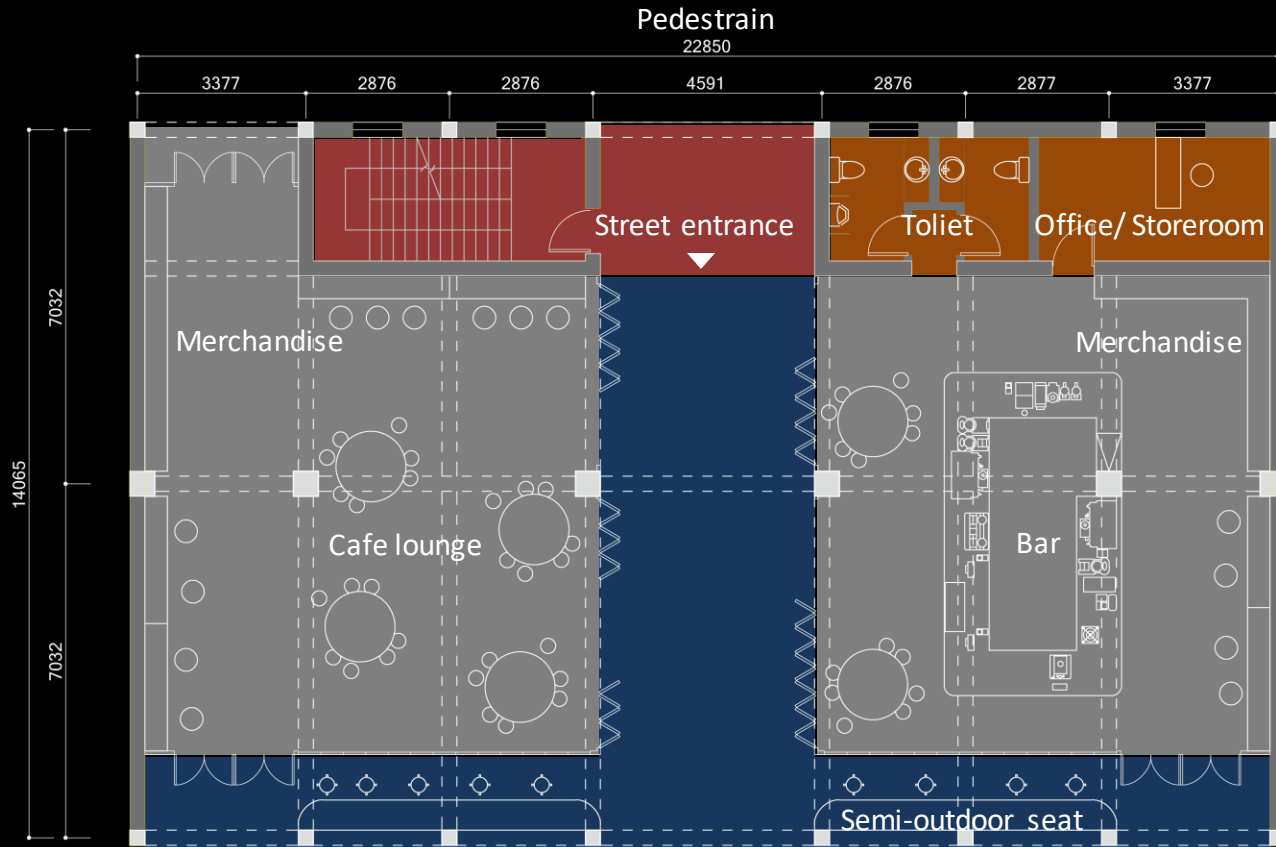
Workshop 3 Interior design: Vienna, Austria

Ground floor: Cafe (Day)

Space Hierarchy : Divide Space by Space

Continue the idea of the structure in the middle along with the street and the inner courtyard.

A completely open interactive interface is created around the inner courtyard.



Gu Jiacheng

Workshop 3 Interior design: Vienna, Austria

Ground floor: Bar (Night)

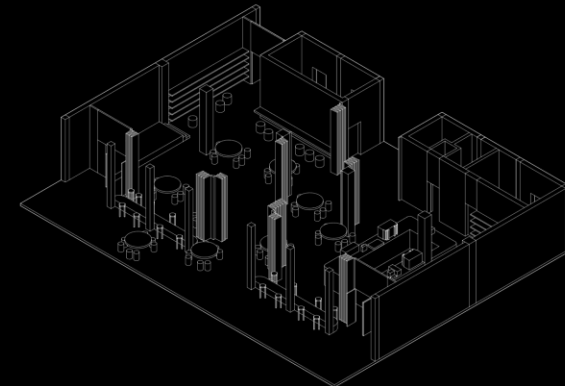
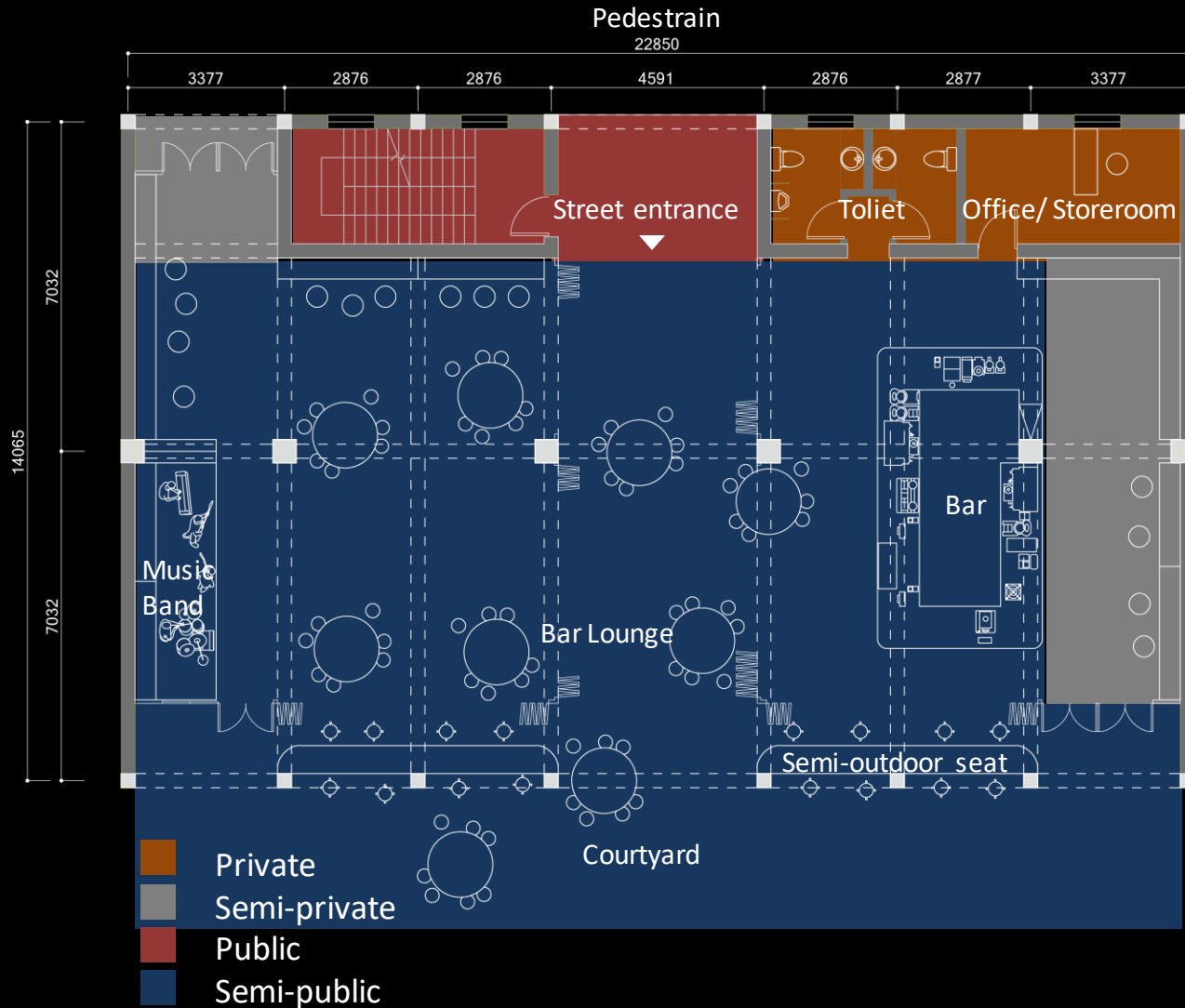
Flexibility : Large and Fully Opened Space

When a music band is playing, the interior space can be fully opened up.

The seating is arranged around the band.

The stage looks out across the bar.

The view of the performance space can be continued further into the inner courtyard.



Gu Jiacheng



Day



Night

Workshop 3 Interior design: Vienna, Austria

Ground floor: Café during the day
/ Bar at Night

**Transparency: Foldable Perforated
Aluminium Partition Wall**

Fold up all the partition walls and rearrange the furniture on the nights that the band plays.

A large, completely open space is gained indoors, and the performance space further activates the inner courtyard space.

Gu Jiacheng

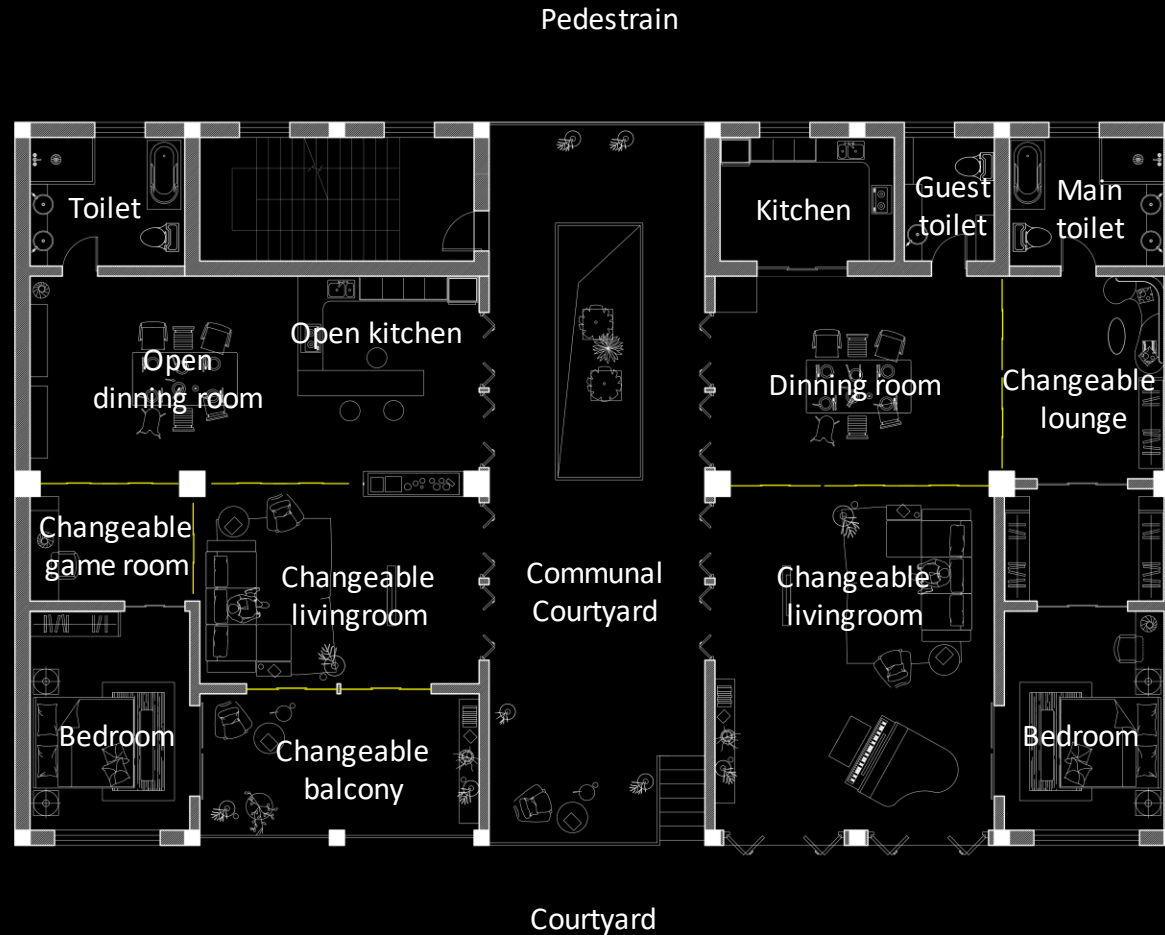
Workshop 3 Interior design: Vienna, Austria

1st floor: Residence

Flexibility: Movable furniture/ Changeable facade

The two separate core tubes provide a better entry experience for the residence, and the atrium in the middle of the two residences also brings green vitality to the living space. The living room can easily connect to the communal atrium. If these two households are familiar enough with each other, they can even open the folding door facing the courtyard at the same time to gather or dine in the communal courtyard

Toilet and kitchen functions are located around the core tube. Continuing the facade design concept, the living room and balcony can be switched between indoor and outdoor.



Zhuang Peida

Workshop 3 Interior design: Vienna, Austria

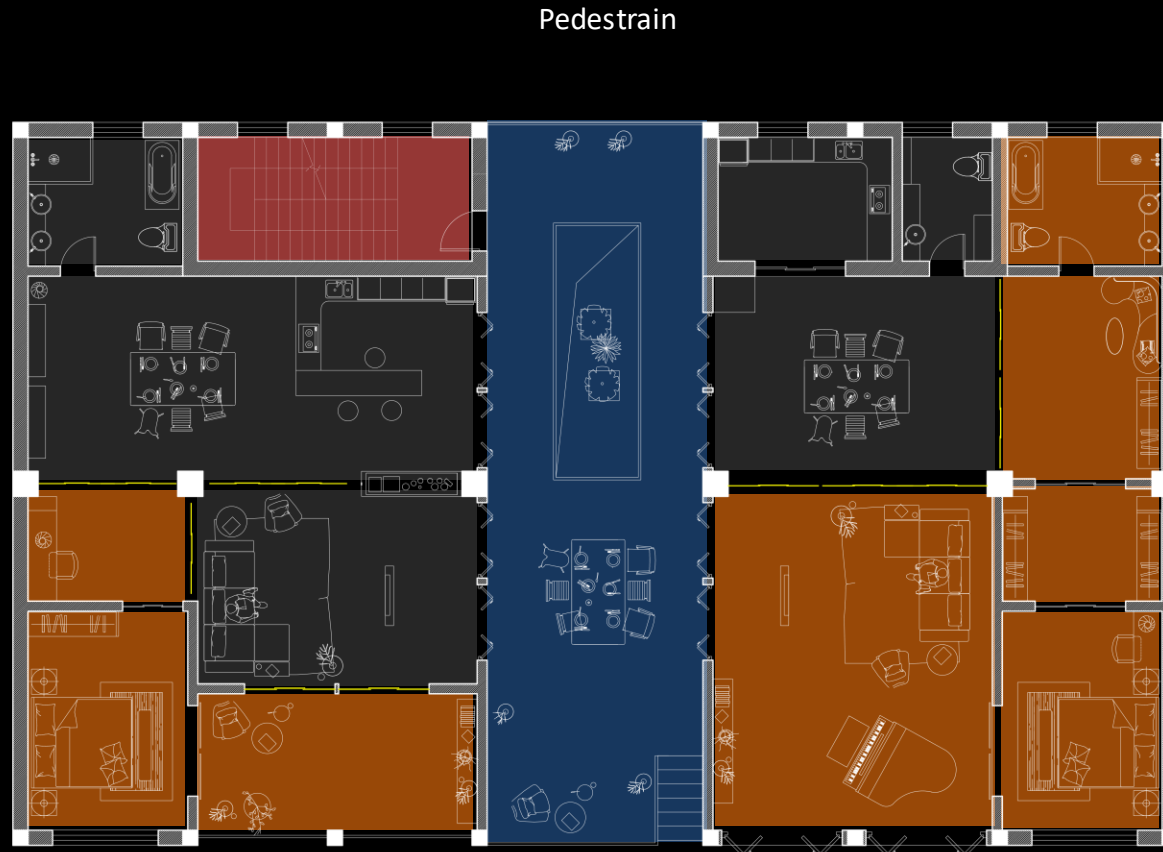
1st floor: Residence

Space Hierarchy: Flexible layout

Residents can change the spatial hierarchy system according to their own needs.

Young household: on the left is a young person who loves to hold parties, with one toilet, an open kitchen, and a bar. The living space, dining room, kitchen, and game room are separated by movable boards surrounding the column.

Parent household: Privacy is more important, with primary and secondary bathrooms and walk-in cloakrooms provided. They often receive guests more formally. As the mobile board is closed, they can dine with guests in the restaurant, providing the integrity of private flow lines while ensuring the needs of guests, such as the use of guest washroom



- Private
- Semi-private
- Public
- Semi-public

Courtyard

Zhuang Peida

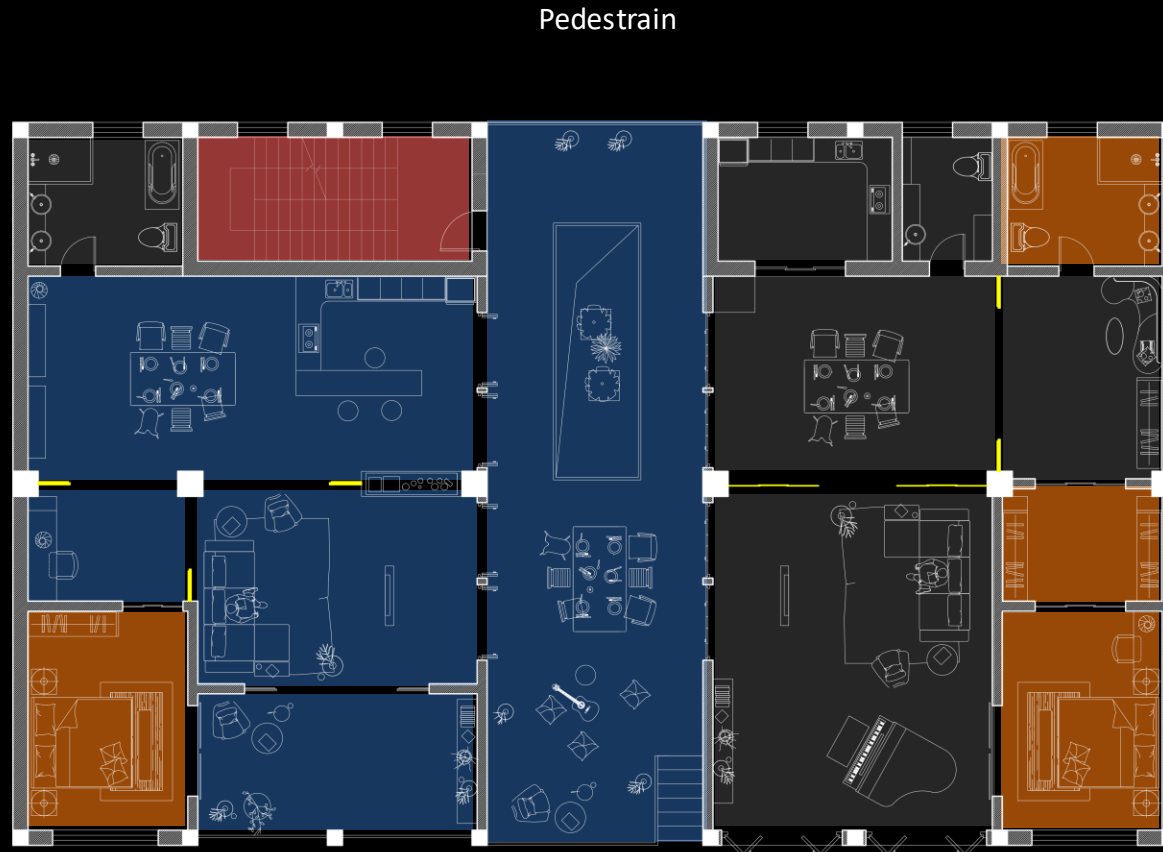
Workshop 3 Interior design: Vienna, Austria

1st floor: Residence

Space Hierarchy: Flexible layout

Young household: Opening the partition can connect three spaces to provide a circular streamline for the party. The balcony can also be used as a smoking area for parties. They can even open folding doors facing the courtyard to extend the party to the courtyard while their parent close them

Parent household: After the meal, they can open the mobile board to open the living room and rest area to the guests. By opening the folding windows on the facade, the living room will also become a semi outdoor space



- Private
- Semi-private
- Public
- Semi-public

Zhuang Peida



Workshop 3 Interior design: Vienna, Austria

1st floor: Residence

Renderings and axo

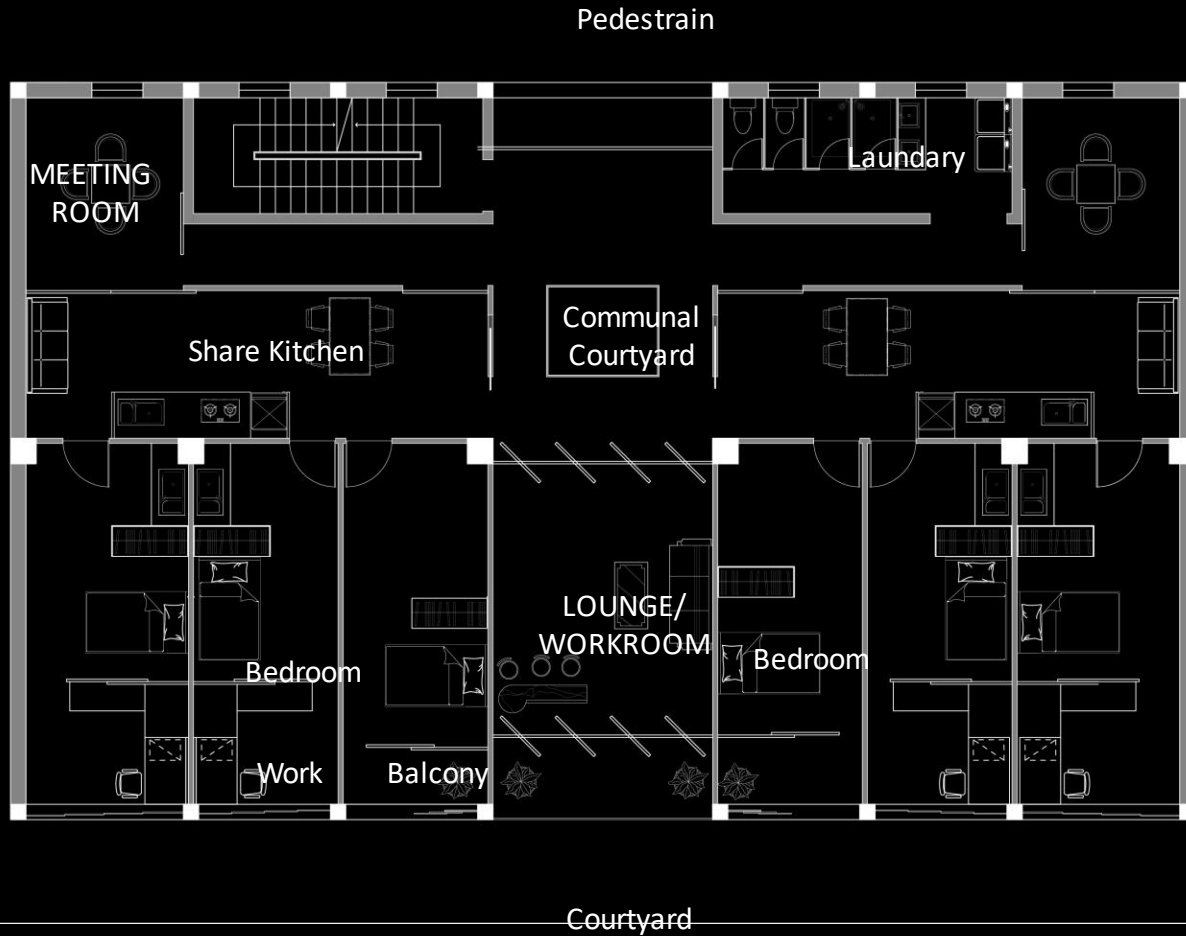


Zhuang Peida

Workshop 3 Interior design: Vienna, Austria

2nd floor: Dormitory

**Flexibility: Rotating Partition
/ Movable door window**

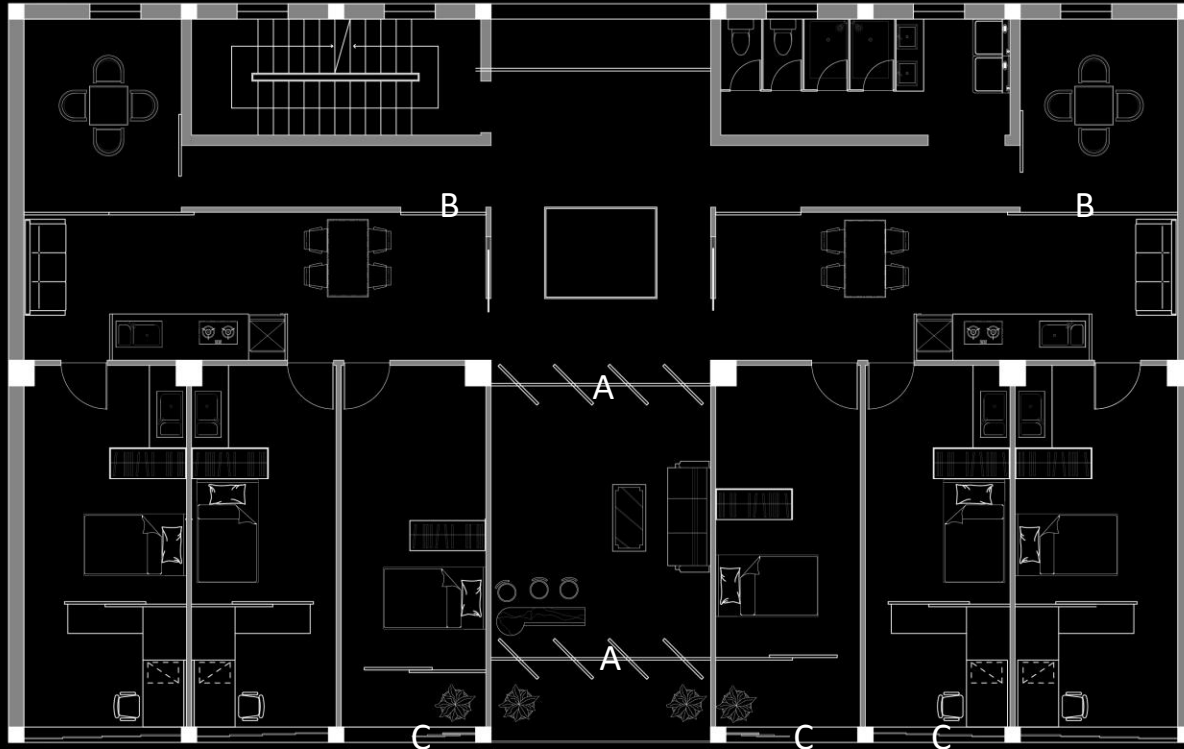


Chen Guojin

Workshop 3 Interior design: Vienna, Austria

2nd floor: Dormitory

Flexibility: Rotating Partition
/ Movable door window



Chen Guojin

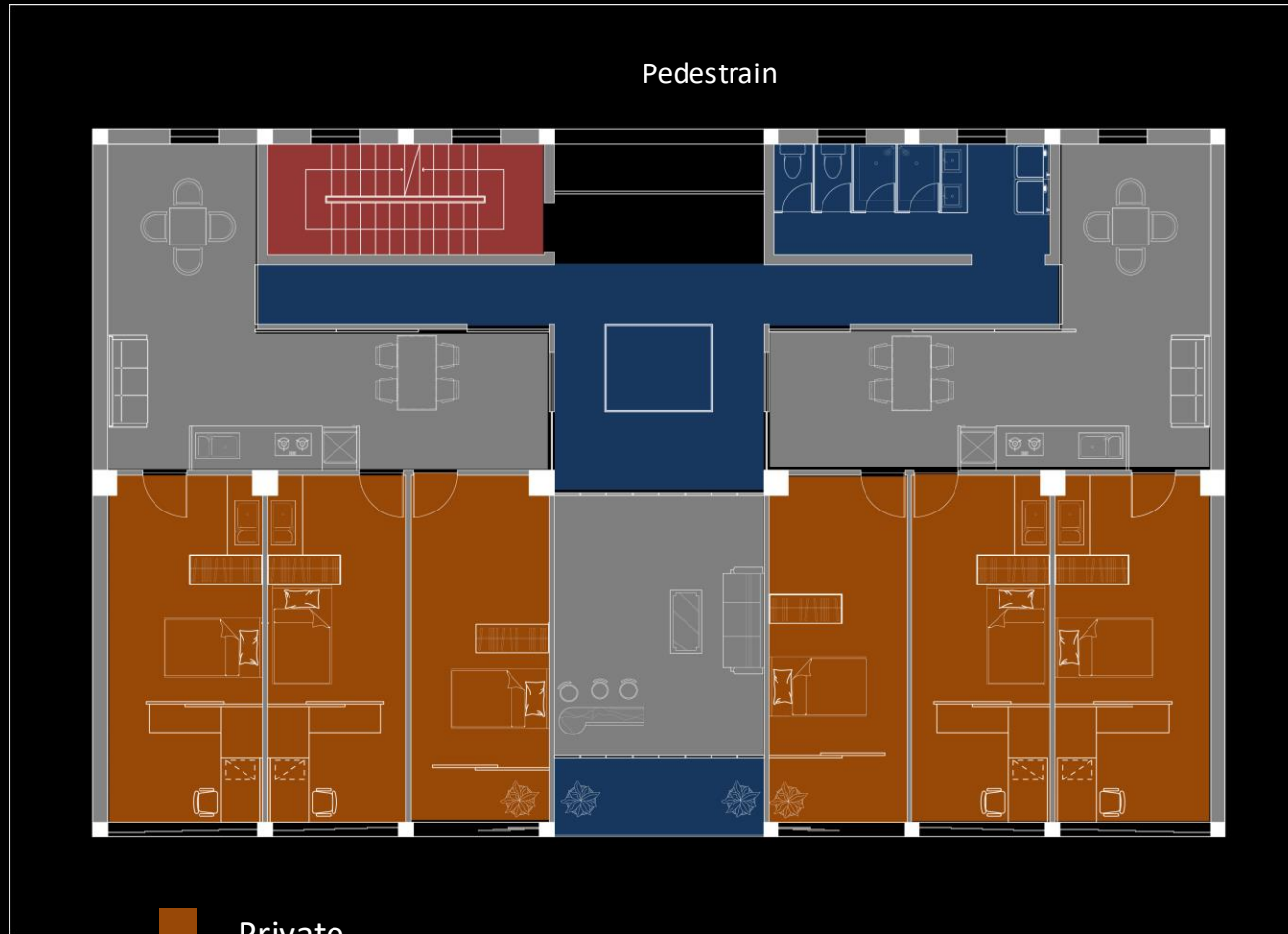
Workshop 3 Interior design: Vienna, Austria

2nd floor: Dormitory

Space Hierarchy: Flexible layout

Young household: Opening the partition can connect three spaces to provide a circular streamline for the party. The balcony can also be used as a smoking area for parties. They can even open folding doors facing the courtyard to extend the party to the courtyard while their parent close them

Parent household: After the meal, they can open the mobile board to open the living room and rest area to the guests. By opening the folding windows on the facade, the living room will also become a semi outdoor space



- Private
- Semi-private
- Public
- Semi-public

Courtyard

Chen Guojin

Workshop 3 Interior design: Vienna, Austria



- Private
- Semi-private
- Public
- Semi-public

2nd floor: Dormitory

Space Hierarchy: Flexible layout

Young household: Opening the partition can connect three spaces to provide a circular streamline for the party. The balcony can also be used as a smoking area for parties. They can even open folding doors facing the courtyard to extend the party to the courtyard while their parent close them

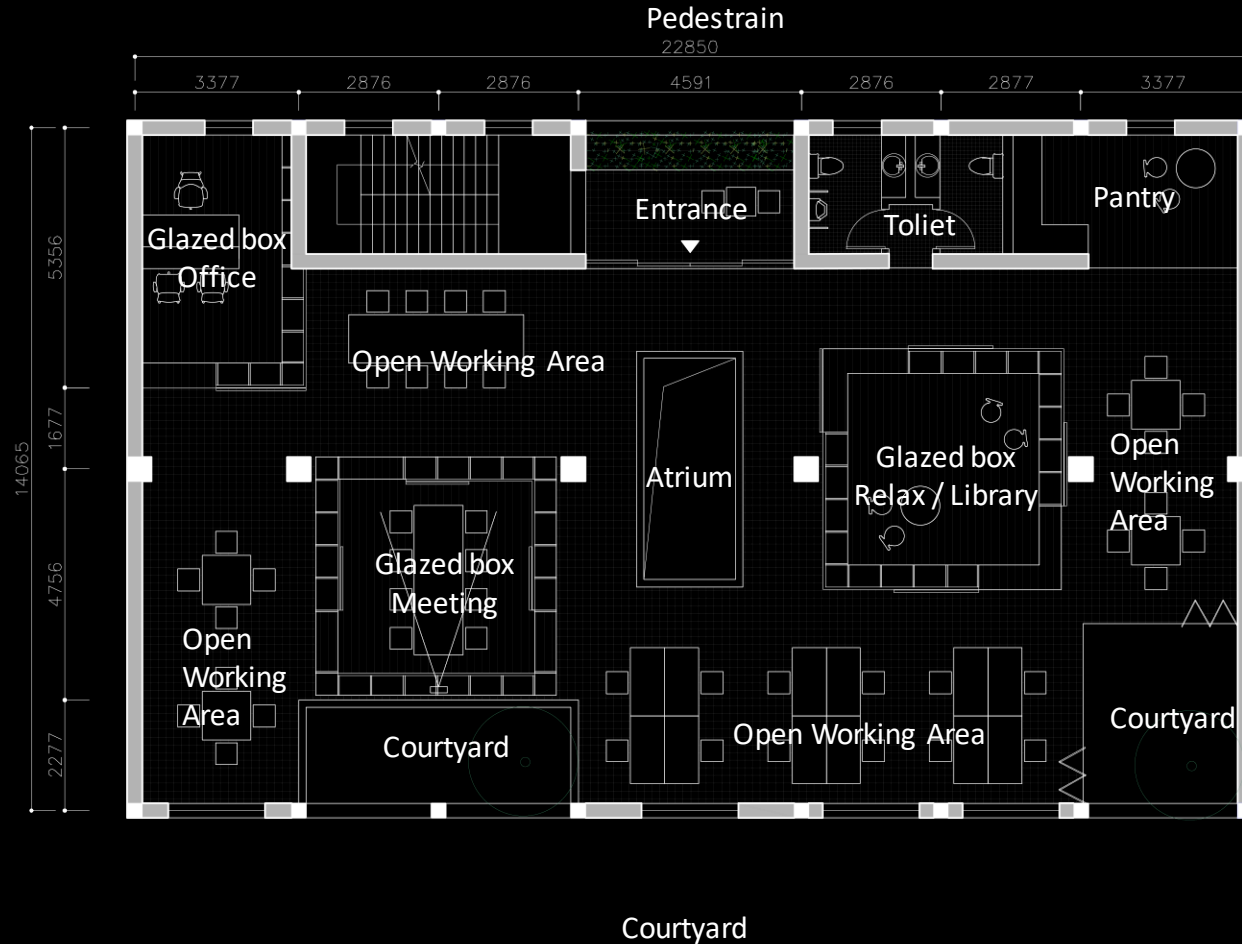
Parent household: After the meal, they can open the mobile board to open the living room and rest area to the guests. By opening the folding windows on the facade, the living room will also become a semi outdoor space

Noise
↑
L
o
u
d

Chen Guojin

Workshop 3 Interior design: Vienna, Austria

3rd floor: Office / Studio



Noise
↑
L
o
u
d

Flexibility: Glazed box / Movable door

Except for the core structure that had been designed, this office is aimed to provide an open working atmosphere. In order to make full advantage of the free plan with columns, no extra structure wall is added except the structure bay nearby the pedestrian. The Glazed box are movable as functional wall provide more possibility for working experience. Moreover, such transparent space give the space more brightness and fresh air and enhance people's interaction.



Library / Meeting / Sinking Tank



Relationship between existing structure and new

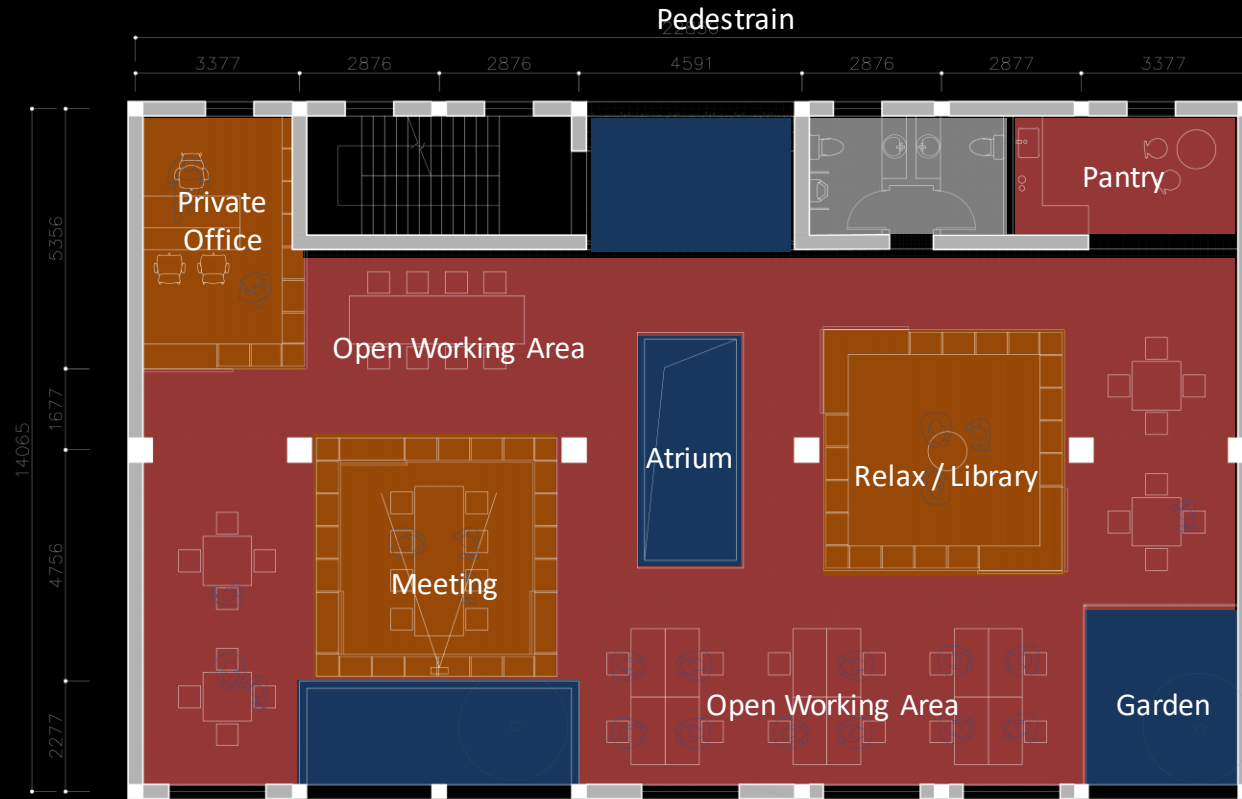
Wu Zhuoying

Workshop 3 Interior design: Vienna, Austria

3rd floor: Office / Studio

Porosity working space – Office time

Those Glazed-shelf boxes are composed by sliding doors and their placement divides the entire interior space into more small open office Spaces that are connected to each other. When the boxes are closed, the interiors can be used as private office, meeting and leisure Spaces for small groups. The rest of the office space still maintains continuous and multi-level office experience.



Courtyard

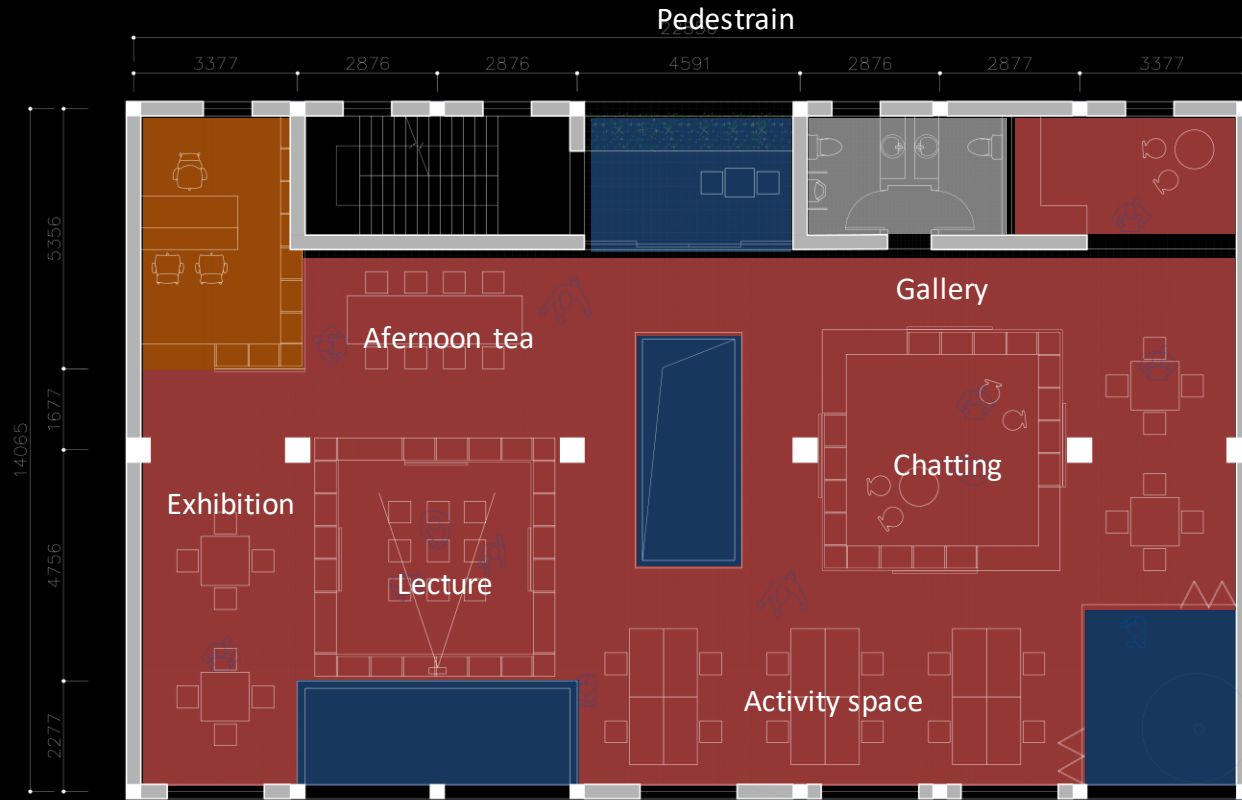
Wu Zhuoying

Workshop 3 Interior design: Vienna, Austria

3rd floor: Office / Studio

Flowing display space – Leisure/Open time

When the moving doors of these boxes are opened, the whole space is connected, and the relationship between people's movement and sight is enriched. Partition walls can be used as display walls. Different compartments allow for different activities and communication.



- Private
- Public / Corridor
- Open Courtyard
- Facility

Courtyard

Wu Zhuoying

Workshop 3 Interior design: Vienna, Austria



3rd floor: Office / Studio



Open – Leisure / Exhibition



Close – Working hour

Wu Zhuoying